

Equation Editor Guide for RICAS Grades 3-5

Some questions ask you to write your answers in a box like the one shown on the right. The top box allows you to enter math only. Click on the box to open the equation editor. The bottom box allows you to enter words and math. Click on **MATH** to open the equation editor.

These boxes are NOT calculators and do not compute answers. Entering your answer in these boxes is like writing numbers and equations using pencil and paper but, on a computer, instead.

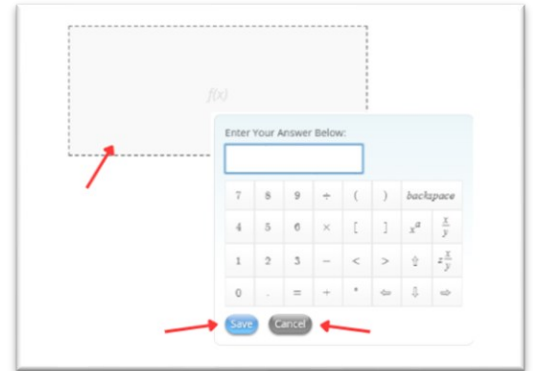
You can use the symbols in the equation editor box when writing your answer. Click on any of the numbers or symbols to add them to your answer.

You can also use your keyboard to enter numbers, letters, spaces, and math symbols. However, not all math symbols are on the keyboard.

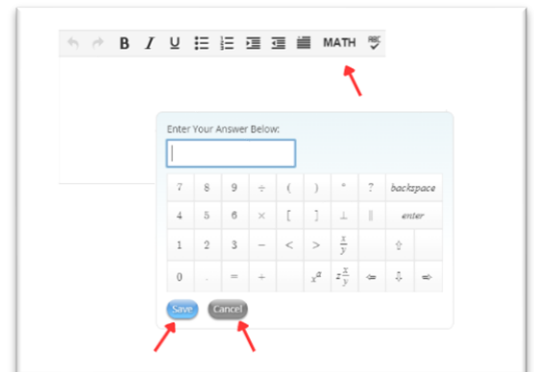
Click **Save** for your math equation to appear in the response box.

Click **Cancel** to close the equation editor.

Enter math only



Enter words and math

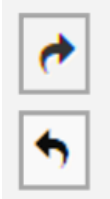


Moving Around or Changing Your Answer



Use the arrows in the equation editor or on the keyboard to move around an equation and to move in and out of fractions or parentheses. You can also click with the mouse or tap with your finger (on a touch-screen device) to move around the equation.

These two buttons are useful for changing your answer:



“undo” what you just entered

“redo” to restore what you deleted

Many symbols (such as \div , \times , $-$, $+$) typically appear between two numbers. You can change a symbol in your equation to another symbol by selecting it and pressing the button for a new symbol. To delete a symbol, use the backspace button in the equation editor or on your keyboard.

Fill-in-the-Blank Questions

If there is already math in an answer box, fill in all of the blanks to complete the answer. The backspace on the keyboard will erase only the blanks.

$$1 + \square = \square + 3 = 5$$

Fill in the blanks

Using the Math Symbols around the Answer Box

The equation editor box has math symbols that you can use to enter your answer. Some of the math symbols may look familiar to you. Some math symbols may look new, like the symbol for a fraction

$$\frac{x}{y}$$

or a mixed number

$$z\frac{x}{y}$$

. On a non-touch-screen device, hover over the symbol with the cursor to read what the symbol is.